

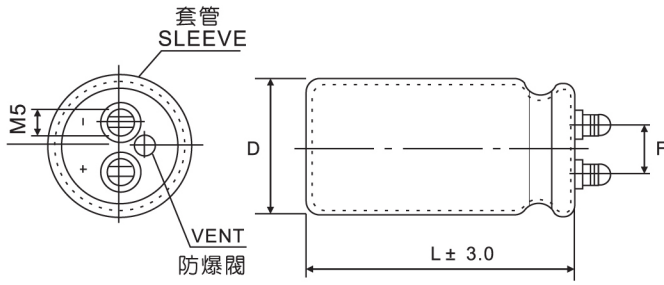
LTX Series

- Endurance with ripple current: 85°C 3000 hours (紋波疊加)
- Ideally suited for use in switching power supply, Computer, inverter, motor-control
- ROHS Compliance



• SPECIFICATIONS

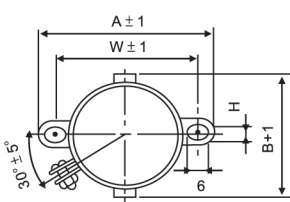
Items	Characteristics										
Category											
Temperature Range	- 40 to +85°C						- 25 to +85°C				
Rated Voltage Range	16 to 100 Vdc						160 to 500 Vdc				
Capacitance Tolerance	± 20% (M)						(at 20°C ,120Hz)				
Leakage Current	I=0.01CV, or 5mA max whichever is greater. (at 20°C after 5 minutes) Where, I :Max. Leakage current (μA). C: Nominal capacitance (μF) .V :Rated voltage(V)										
Dissipation Factor (tan δ) (at 20°C ,120Hz)	φ \ R.V	10	16	25	35	50	63	80	100	165~250	350~500
	35	0.75	0.6	0.4	0.3	0.25	0.2	0.2	0.15	0.15	0.2
	50	0.85	0.65	0.45	0.3	0.3	0.3	0.25	0.2	0.15	0.2
	65	1.0	0.7	0.5	0.5	0.3	0.3	0.25	0.2	0.15	0.2
	76	1.3	0.8	0.7	0.6	0.5	0.4	0.25	0.25	0.2	0.25
	80	1.5	1.0	0.8	0.7	0.6	0.4	0.3	0.25	0.2	0.25
	90	1.5	1.0	0.8	0.7	0.6	0.4	0.3	0.25	0.2	0.25
Low Temperature Characteristics	10~100 V	Z-40°C / Z +20°C			≤ 12						
	160~500 V	Z-25°C / Z +20°C			≤ 8			at 120Hz			
Load. Life	The following specifications shall be satisfied when the capacitors are restored to 20°C after the voltage is applied for 3000 hours at 85°C										
	Capacitance change	≤ ±20% of the initial value									
	DF (tan δ)	≤ 200 % of the initial specified value									
	Leakage current	≤ The initial specified value									
Shelf Life	The following specifications shall be satisfied when the capacitors are restored to 20°C after exposing them for 1000 hours at 85°C without voltage applied at rated temperature.										
	Capacitance change	≤ ±20% of the initial value									
	DF (tan δ)	≤ 200 % of the initial specified value									
	Leakage current	≤ The initial specified value									
Ripple Current & Frequency Multiplier	R.V.(V)	φ (mm)	Frequency (Hz)								
			50	60	120	300	360	1K	10K		
	10~100	35~42	0.90	0.94	1.00	1.06	1.09	1.03	1.15		
		50~65	0.93	0.97	1.00	1.04	1.06	1.10	1.13		
		76~80	0.95	0.98	1.00	1.02	1.03	1.07	1.08		
	160~250	35~42	0.80	0.86	1.00	1.07	1.08	1.12	1.17		
		50~65	0.86	0.91	1.00	1.05	1.06	1.08	1.10		
		76~80	0.90	0.95	1.00	1.05	1.06	1.08	1.10		
	315~400	35~42	0.71	0.79	1.00	1.09	1.11	1.15	1.21		
		50~65	0.83	0.88	1.00	1.07	1.08	1.13	1.20		
76~80		0.85	0.90	1.00	1.05	1.06	1.11	1.20			
Ripple Current & Temperature Multiplier	Temperature (°C)		40		60		70		85		
	Multiplier		2.0		2.0		1.7		1		



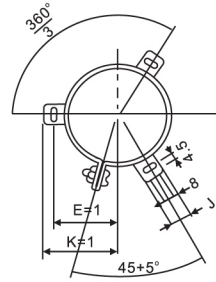
Mounting clamp 卡箍

TYPE TG

Y Type



I Type



D ± 1.5	F ± 1
35	14
42	15
50	22
65/63.5	28
76	32
80	32
90	32

D	A	B	W	H
35	62	44	50	3.2
42	64	50	54	3.5
50	80	64	68	4.5
63(63.5)	93	76	81	4.5

D	E	K
50	32.5	37
65(63.5)	38.0	43.5
76	44.5	50.5
80	46.5	53.0

● DIMENSIONS

UF	V.DC Item	10V		16		25		35		50		63		80		100	
		φ DxL	Ripple Current	φ DxL	Ripple Current	φ DxL	Ripple Current	φ DxL	Ripple Current	φ DxL	Ripple Current	φ DxL	Ripple Current	φ DxL	Ripple Current	φ DxL	Ripple Current
3300														35*50	2.5	35*60	3.2
4700														35*60	2.9	35*80	3.5
6800										35*50	3.3	35*50	2.7	35*80	3.7	42*80	4.5
10000								35*50	3.6	35*60	4.3	35*60	3.6	42*80	5.0	50*80	6.3
15000						35*50	3.8	35*60	4.0	35*80	5.5	35*80	4.9	50*80	7.7	50*100	8.5
22000				35*50	5.0	35*60	5.4	35*80	5.2	42*80	6.1	42*80	5.8	50*100	8.0	50*120	10.2
33000		35*50	4.5	35*60	5.5	42*60	6.0	42*80	6.3	50*80	7.1	50*80	7.1	50*120	10.5	65*120	11.7
47000		35*60	6.1	42*60	7.3	42*80	8.0	42*100	7.6	50*100	8.7	50*100	8.8	65*120	14.4	65*145	16.6
56000		35*70	7.2	42*70	8.0	76*105	9.0	50*80	8.9	50*120	9.2	50*120	9.0	65*120	16.1	76*145	19.7
68000		35*80	7.9	42*80	8.3	50*80	9.0	50*80	10.8	50*120	11.2	65*100	10.9	65*145	18.8	76*145	23.8
100000		42*80	9.3	50*80	10.9	50*100	12.0	50*120	13.6	65*120	14.2	65*120	16.3	76*145	21.2	90*170	30.9
150000		50*80	11.0	50*100	12.6	65*100	15.3	65*120	15.9	76*120	21.3	76*145	24.5				
220000		50*100	14.1	65*100	14.7	65*120	17.9										
330000		65*100	17.3	80*100	18.3												
470000		76*100	19.3														

Ripple Current:A/rms at 120Hz , 85°C Dimension: φ DxL(mm)

Chip Type SMD
Miniature Type
General Purpose
High Frequency Low Impedance
High Voltage High Reliability
Non-polar Type
Large Size Snap-in
Large Size Screw
X Metallized Polypropylene Film Capacitors

◆ LARGE ALUMINUM ELECTROLYTIC CAPACITORS LTX Screw 85°C

● DIMENSIONS

uF	100		200		250		350		400		450		500	
	ϕ DxL	Ripple Current	ϕ DxL	Ripple Current	ϕ DxL	Ripple Current	ϕ DxL	Ripple Current	ϕ DxL	Ripple Current	ϕ DxL	Ripple Current	ϕ DxL	Ripple Current
220							35*50	1.3	35*50	1.5	35*50	1.6	42*80	1.7
330					35*50	1.4	35*50	1.6	35*60	1.7	35*60	1.8	50*80	2.2
470			35*50	1.4	35*50	1.6	35*60	2.1	35*80	2.3	35*80	2.4	50*100	2.8
680	35*50	1.5	35*50	1.6	35*60	1.7	35*80	2.9	42*80	2.9	42*80	3.1	65*100	3.9
1000	35*50	2.0	35*60	2.2	35*80	2.4	42*80	3.8	50*80	3.9	50*80	4.0	65*100	5.1
1500	35*60	2.8	35*80	2.9	42*80	3.1	50*80	4.7	50*100	4.8	50*100	5.7	65*120	6.8
2200	42*60	3.6	42*80	3.6	50*80	3.9	50*100	6.4	65*100	7.0	65*100	7.2	76*120	8.5
3300	50*60	4.7	50*80	4.8	50*100	5.4	65*100	8.8	65*120	9.5	76*120	10.5	76*130	11.5
4700	50*80	5.6	50*100	7.1	65*100	7.3	76*100	12.0	76*120	12.8	80*150	13.3	76*160	14.7
5600	50*100	6.6	50*100	8.4	65*120	8.6	80*100	14.2	76*130	15.2	90*145	15.8	76*180	16.9
6800	50*100	7.5	65*100	9.5	65*120	9.9	80*120	16.0	80*150	17.5	90*160	19.1	90*170	20.8
8200	50*120	9.0	50*120	10.4	76*120	10.9	80*120	19.2	90*150	21.1	90*160	23.0	90*180	25
10000	65*100	9.9	65*120	11.1	76*120	11.8	80*150	20.0	90*160	25.7	90*170	28.0	90*200	32.4
15000	76*100	12.7	76*120	12.9										

Ripple Current:A/rms at 120Hz , 85°C Dimension: ϕ DxL(mm)